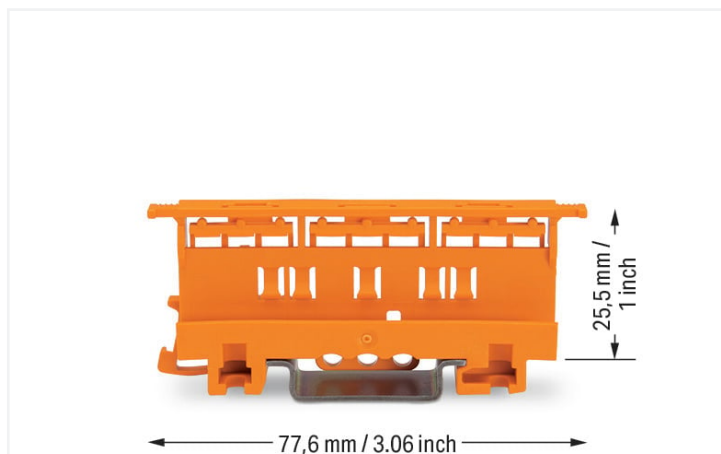


## Data Sheet | Item Number: 221-500

Mounting carrier; 221 Series - 4 mm<sup>2</sup>; for DIN-35 rail mounting/screw mounting;  
orange

<https://www.wago.com/221-500>



Color: ■ orange

### Physical data

Width 17.5 mm / 0.689 inches

### Mechanical Data

Mounting type DIN-35 rail  
Screw mount

Suitable for 2-, 3- and 5-conductor 221 Series Splicing Connectors (4 mm<sup>2</sup>)

### Material Data

Note (material data) [Information on material specifications can be found here](#)

Color orange

Material group I

Insulation material Polyamide (PA66)

Flammability class per UL94 V0

Fire load 0.294 MJ

Weight 9.6 g

### Commercial data

eCl@ss 10.0 27-14-11-92

eCl@ss 9.0 27-14-11-92

ETIM 8.0 EC002848

ETIM 7.0 EC002848

PU (SPU) 50 (10) pcs

Packaging type Box

Country of origin CN

GTIN 4055143421942

Customs tariff number 39269097900

### Downloads

### Environmental Product Compliance

Compliance Search	
Environmental Product Compliance 221-500	↓

## Documentation

Bid Text			
221-500	19.02.2019	xml 2.72 KB	↓
221-500	23.01.2019	docx 14.58 KB	↓
ausschreiben.de 221-500			↓

## CAD/CAE-Data

CAD data	
2D/3D Models 221-500	↓

CAE data	
EPLAN Data Portal 221-500	↓
ZUKEN Portal 221-500	↓

## 1 Compatible Products

### 1.1 Optional Accessories

#### 1.1.1 Marking

##### 1.1.1.1 Marking strip



**Item No.: 210-833**  
Marking strips; 25 m on roll; 6 mm wide; plain; Self-adhesive; white

#### 1.1.2 Mounting adapter

##### 1.1.2.1 Mounting accessories



**Item No.: 222-510**  
Angled DIN-rail adapter; in combination with mounting carrier; 221-500 or 222-500; for DIN-35 rail mounting; gray



**Item No.: 222-505**  
Strain relief plate; for mounting carrier; 221 or 222 Series, can be snapped

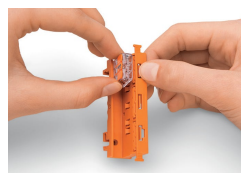
## Installation Notes

Conductor termination



CAGE CLAMP® connection:  
Conductor termination with connectors fitted in a mounting carrier

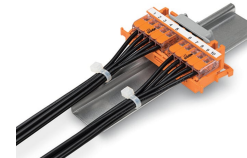
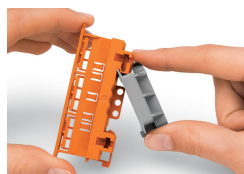
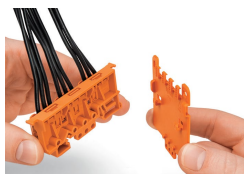
Removing a conductor.



Inserting a connector into the mounting carrier.

Inserting a connector into the mounting carrier.

Removing a connector from the mounting carrier.

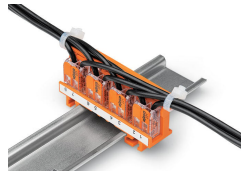
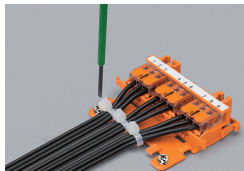


Securing a strain relief plate (222-505) to the mounting carrier.

Snapping the angled DIN-rail adapter (222-510) onto the mounting carrier.

Horizontal mounting on DIN-35 rail using an angled DIN-rail adapter

Horizontal mounting on DIN-35 rail using an angled DIN-rail adapter

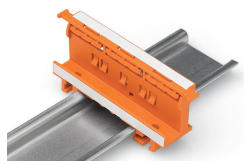


Horizontal screw mounting with strain relief plate on a flat surface

Vertical mounting with strain relief plate on DIN-35 rail

Strain relief via cable ties on the mounting carrier (transverse to the connectors' wiring direction) – clamping units labeled via marking strips (210-334)

Vertical screw mounting with strain relief plate on a flat surface



Mounting carrier on a DIN-35 rail

Testing



Testing connectors via test slots on top of the carrier.